



*A Century
of Solutions*





A Message From The President

It's not easy to become a 100-year-old company. We celebrate this milestone knowing what it takes and having the passion and desire to execute on a company vision that brought us here and will carry us forward.

At Bauer, we have worked to live the principles we believe in to obtain all of the benefits that come from building a company that is designed to last for 100 years and to embark on the next century.



- *Relationships and partnerships with our customers are rock solid, and they produce tremendous returns. Trust and dependability are cornerstones.*
- *Our strength is in our people, employees who seek to make a positive difference with their minds and through their dedicated efforts. Our investment in employees – and the investments by employees in our company – produces mutual trust, respect and commitment.*
- *We know our business technically and we put a strong emphasis on core strengths. The core strengths and priorities of the company have endured, even though the particular products the traditions apply to have changed and evolved over the course of the years.*
- *We are willing to chart new territory, helping industry leading companies to develop the latest in flight safety solutions and forging key customer relationships in multiple regions of the world.*
- *We are striving always to be better, focusing on continued improvement and innovation, while still remembering our company's traditional priorities and organizational strengths.*

As Bauer celebrates its 100th year in business, we have reaffirmed our Mission, our Values and Principles, and our Strategies. We are positioned to deliver exceptional customer value over the coming years, drawing upon our rich history and building on our reputation by recruiting and retaining the best and brightest people.


Lou Auletta, Jr.
 President & CEO

Where we started...

Bauer's early years as a Hartford, CT-based manufacturer of high quality and reliable industrial products, set the stage for our steady, long-term growth. With the dawn of modern aviation, Bauer established itself as a sought-after provider of support and test equipment. Our temperature simulator product line quickly became the industry standard.



Bauer Booth at the Paris Airshow, 1967

Through the years our product lines expanded. While recognized as the industry experts in engine fuel component test systems, we steadily added to our repertoire. Now we cover nearly all aspects of aircraft and engine accessory test requirements. Along the way, we introduced a series of Wheel and Brake assembly products that have become the gold standard at military and commercial aircraft maintenance facilities around the world.

Where we are headed...

These days, Bauer's focus is truly on finding new and innovative ways to support the ongoing success of our customers. This comes in many forms, including:

- Capability Development / ROI Planning Assistance
- Enhanced Test Software with Complete Expansion Flexibility
- Fast, Robust, Data Acquisition and Control Platform
- Lean, Customer Value Oriented Process for Shortest Possible Deliveries
- Continuous Refinement and Enhancement of Proven System Designs
- Cutting-Edge Equipment Monitoring for Preemptive Maintenance / Minimum Downtime



More than anything, we are looking to continuously strengthen the close working personal bonds with our customers. We view our understanding and sensitivity to our customer's critical business needs as our greatest value, and the key to our own growth and continued success.

Featured Products

MTS7000 Electronic Test System

The Bauer MTS7000 Electronic Test System provides electrical interface signals to a wide range of aircraft and engine accessories.

It serves as an Electronic Engine Control (EEC) or Full Authority Digital Engine Control (FADEC) simulator in the testing of Fuel Controls, Hydro-Mechanical Units (HMU) and Fuel Metering Units (FMU).

- Portable Cart, for use with several Test Stands, or integrated into a Test Stand
- Ethernet Connection to PC Running User Interface Software
- Provides all required Current Drivers, Voltage Drivers, Resolvers, LVDT/RVDTs, Digital and Analog I/O
- Integrated 32-bit Microcontroller Manages I/O and Communication to PC



**Bauer Senior Engineer Joel K.
on the MTS7000:**

"Technology advancements in microprocessor capabilities play a very important role in our MTS7000 product development. Increased functionality, reduced size, and standardized configurations all drive our product vision."

ATS3000 Advanced Test Software

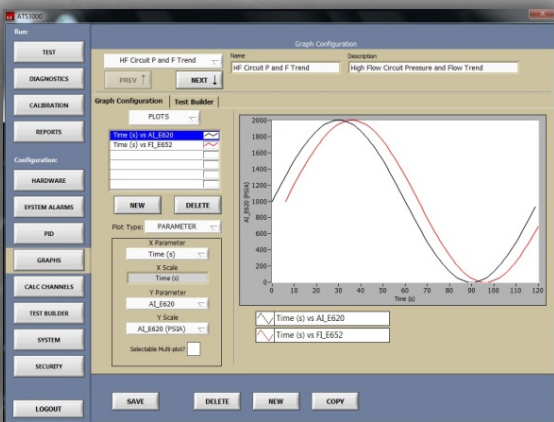
ATS3000 is data acquisition and test management software, specifically designed and developed by Bauer, with the aircraft component testing process and the test stand operator in mind. We continuously enhance the software for ever-increasing productivity, reliability, and data accuracy required by our customers.

Data Logging & Automatic Parameter Control

- Accurate & Consistent Test Data
- Improved Productivity
- Can be Added to Existing Equipment
- Easily Expandable for New Component Capability

Options

- Test Program Set (TPS) Development
- Software Training
- Software Maintenance Plan
- Manual / Semi-Auto / Automatic Operation
- Fully User Configurable – No Need to Edit Source Code

A screenshot of the ATS3000 software interface showing test data tables. The 'TEST DATA' table has columns for Test Point, Time, T2, P13, P16, P18, P19, P20, P21, P22, P23, P24, P25, P26, P27, P28, P29, P30, P31, P32, P33, P34, P35, P36, P37, P38, P39, P40, P41, P42, P43, P44, P45, P46, P47, P48, P49, P50, P51, P52, P53, P54, P55, P56, P57, P58, P59, P60, P61, P62, P63, P64, P65, P66, P67, P68, P69, P70, P71, P72, P73, P74, P75, P76, P77, P78, P79, P80, P81, P82, P83, P84, P85, P86, P87, P88, P89, P90, P91, P92, P93, P94, P95, P96, P97, P98, P99, P100. The 'PARAMETER' table has columns for Parameter, Low, Actual, High, and Units. The 'TEST INFORMATION' table has columns for Test Point, Time, and Units. The interface also includes a 'TEST BUILDER' section with a 'Test Program Set (TPS) Development' button and a 'Software Training' button.

**Bauer Senior Engineer Keith B.
on ATS3000:**

"Our ATS3000 software allows for quick and easy configuration for all of your inputs and outputs, and provides the capability to add more whenever the need arises. The flexible architecture allows you to create any functionality you can think of. If it can be done in LabVIEW®, you can do it with ATS!"

Featured Products

Portable Engine Software Loader

Design & Manufacturing of Critical Engine Support Equipment

The Bauer Model 7793 Engine Software Loader (ESL) allows for engine software updates to be performed while the engine is both on wing and in overhaul status, without having to manage the shipment of FADEC hardware back to OEM facilities for software updates.



- Portable PELICAN Case Construction Holds a Hand-Held Tablet PC and Cable Harnesses
- Updates Flight Software and Retrieves Engine Fault Codes
- Bauer Turnkey Program Management for ESL Lifetime Support
- Manufactured for Engine/APU OEMs



Bauer Senior Engineer Jeff B. on the Portable Engine Software Loader:

"The sleek, portable, roller case design of our Common Engine Software Loader allows for effortless on/off wing reprogramming of your Electronic Engine Control. The rugged user interface equips you with the ultimate experience to suit your needs."

Actuator Test Stand

The Bauer Model 8631 Actuator Test Stand provides a flexible platform for testing an incredible variety of actuators, including electrically and/or mechanically operated rotary and linear units.

- Actuator-Specific Test Fixturing and Electrical Cables
- Precision LVDTs/Encoders for Position Measurement
- High Accuracy Load Cells
- Hydraulic Power Pack for Load Cylinders



Bauer Senior Electrical Engineer Pete B. on the Actuator Test Stand:

"The Bauer Actuator Test Stand platform is designed to offer maximum flexibility for adding new component capability when needed. In particular, with the Bauer approach, our customers can add new capability easily and self-sufficiently."



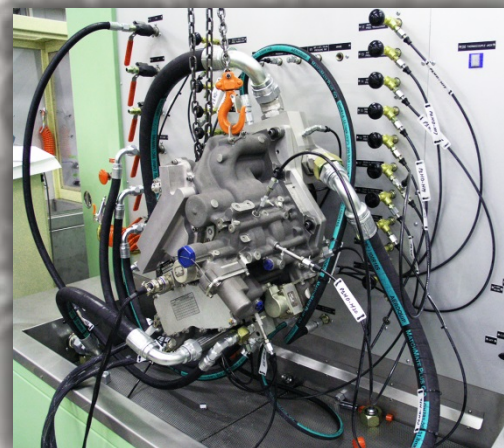
Aircraft / Engine Component Test Equipment

From legacy systems to tomorrow's newest fleets, Bauer test stands and electronic test boxes are precisely engineered to provide solutions that fulfill our customers' current requirements with a focus on expansion and growth to accommodate their future needs.

Bauer 1000 Series Fuel Accessories Test Stands

Covering a wide range of test capability for hundreds of high and low flow engine fuel accessories:

- Fuel Controls (HMUs, FMUs)
- Fuel Pumps
- Fuel Nozzles
- Fuel Boost & Transfer Pumps
- Fuel Flow Transmitters
- Fuel Actuators & Valves
- Servovalves
- APU Fuel Accessories



Bauer 3000 Series Engine Lubrication Oil Test Stands

Providing test capabilities for all types of engine lubrication system rotating and non-rotating accessories:

- Lube & Scavenge Pumps
- Gearbox Components
- Oil Nozzles
- Heat Exchangers
- Oil Coolers
- Valves



Aircraft / Engine Component Test Equipment

Bauer 5000 Series Pneumatic Component Test Stands

Providing universal test capability, including fully integrated facilities, for all types of pneumatic components:

- High and Low Flow Valves
- High Temperature Valves
- Pneumatic Actuators
- Anti-icing Valves
- Air Cycle Machines
- Engine Air Starters
- Pneumatic Heat Exchangers



Bauer 8000 Series Electro-Mechanical Component Test Stands

Covering a wide variety of electro-mechanical components with versatility and flexibility:

- Linear Actuators
- Rotary Actuators
- Ballscrews
- Cargo Power Drive Units



Support Equipment

Aircraft Engine Support Equipment

Working in close cooperation with engine and component OEMs, Bauer has developed innovative solutions for a wide range of support equipment, with applications in component repair shops, engine shops, and in the hangar.

- Electrical Test Boxes
- Portable Fuel Nozzle Testers
- Ultrasonic Fuel Nozzle Cleaners
- Preservation Oil Carts
- Oil Cooler Flushing Carts
- Engine Air Flow Test Carts
- Engine Oil Flow Test Carts
- Engine Assembly Heaters
- Cable and Harness Testers



Wheel & Brake Equipment

Aircraft Wheel & Brake Support Equipment

Bauer supplies aircraft wheel & brake shops with products that significantly improve productivity, enhance the work environment and increase safety. Our wheel & brake equipment is being used and recommended by the world's leading OEMs, airlines, and MROs.



- Wheel Build-up Stands
- Automatic Torquing Systems
- Bead Breakers
- Wheel Assembly/Disassembly Stands
- Automatic Tire Inflators and Safety Cages
- Brake Test Stands

Did you know?

Bauer, Inc. was formerly owned by Woodward, Inc.

On January 31, 1991, Bauer (then called Bauer Aerospace) was purchased by Woodward (then called The Woodward Governor Company). Bauer became the first company acquired in the 121-year history of Woodward at that time.



Aviation Tooling

Bauer designs and manufactures tooling to support all levels of component repair, overhaul and test based on the exacting specifications and requirements of OEM component maintenance manuals (CMMs) and military technical orders (TOs).

As organizations worldwide adhere to strict regulatory guidelines for safety and reliability, Bauer ensures that the tooling we provide is fully traceable and meets all Equivalency Certification Requirements.

- Test Adapters and Fixtures
- Test Tooling
- Assembly / Disassembly Tools
- Repair Tools
- Calibration Tools



Did you know?



Bauer products are built to last ...a long time.

Just down the road from our headquarters, one of our customers is still using a Bauer product installed in November of 1948. The customer tells us most of the original parts are still intact.



Innovation Through the Eyes of a Past President

Over the past 39 years I have seen and been part of some significant changes at Bauer. Many of the changes I have experienced are related to technology. The drafting boards that filled our engineering department when I joined the company as chief engineer in 1973 have long since been replaced by computer aided design. Drawing and document files filled with engineering data have been replaced by digital storage. An enterprise computer system has replaced basic business functions that were performed laboriously by hand. Production equipment has been replaced with state of the art machines and processes are continually improved to keep pace with best practices.



The internet has placed information at our fingertips which previously would have required extensive research. The convenience of connectivity, whether by email, cell phone, or other means has put people in touch instantly from anywhere and at any time. All of these changes have had a tremendous impact on improving productivity, quality and effectiveness. Bauer has also realized the constantly growing importance of globalization on our business. Even 50 years ago we performed work for a few customers overseas. But our business has expanded significantly to the point where we have now delivered equipment to customers in over 100 countries, with international sales now accounting for nearly 70% of our business annually.

Most importantly we have developed lasting relationships with so many companies and individuals all over the world.

Perhaps even more impressive than what has changed at Bauer are the things that have not changed. Bauer remains fully committed today to the most important reasons for our success – providing a consistently high level of customer service and placing high value on our greatest assets, our dedicated people.

Frank Bauer would always remind people of these basic principles for building and maintaining a successful company -

- Know our business technically
- Take care of our customers
- Maintain our integrity at all times

These fundamental concepts are just as relevant today as they were a century ago.

Lou Auletta, Sr.
Former President & CEO
Bauer Career 1973 - 2012



www.bauerct.com

Bauer, Inc. 175 Century Drive Bristol, Connecticut USA +1 (860) 583-9100